



**WHOLE SCHOOL**

## A HOLISTIC APPROACH TO SCHOOL WELLNESS RESULTING IN “WHOLE SCHOOL” CERTIFICATION

### What is School WELLNESS?

Campus and Community - Environment, Health, Safety, and Sustainability

### What does a holistic approach look like?

Unlike single project driven initiatives, which is the typical path most facilities managers and school administrators choose, RAISE creates a vision that consolidates many puzzle pieces to create a clear picture. Environment, Health, Safety, and Sustainability initiatives intersect with each other.

The MAIN IDEA is that all solutions intersect for WELLNESS.... Clean Air, Water, Low Toxic Sanitation, Clean Efficient Energy, Zero Waste, Sustainability and Healthy Safe People!



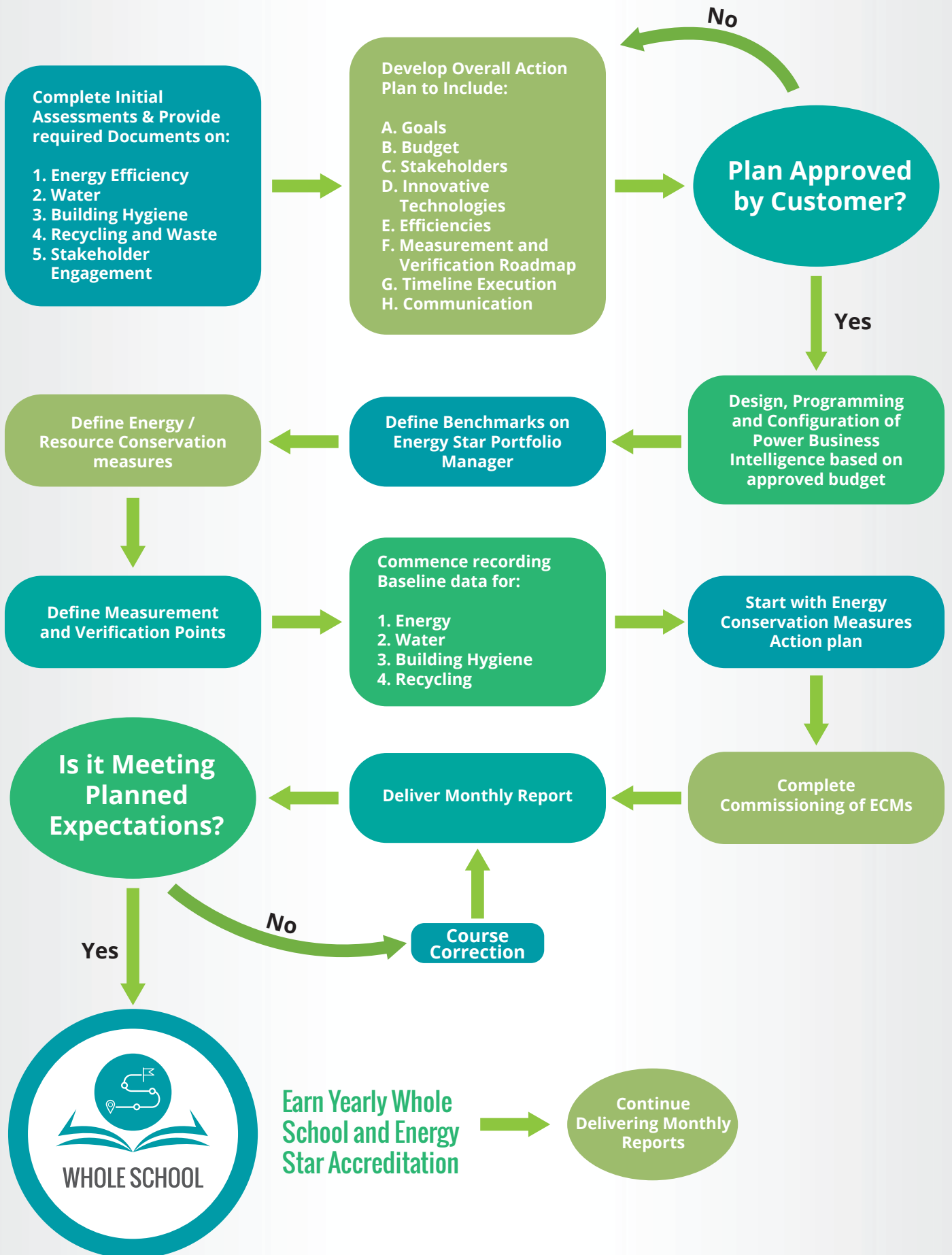
### A whole school program CONSIDERS THE FOLLOWING:

- Goals
- Budget
- Stakeholders
- Innovative Technologies
- Efficiencies
- Measurement and Verification
- Roadmap and Timeline
- Execution
- Communication



**FOR INFORMATION**  
[carol@raiseglobalservices.com](mailto:carol@raiseglobalservices.com)  
[www.whole-school.org](http://www.whole-school.org)

# STEPS TO BECOME WHOLE SCHOOL CERTIFIED:



# STEPS TO BECOME WHOLE SCHOOL CERTIFIED:

1. Assess
2. Measure current conditions (Set up baselines)
3. Benchmarking (EPA-Energy Star Portfolio Manager provides tool to compare with similar buildings across the US)
4. Set Goals
5. Choose appropriate innovations to maximize budget and reach goals
6. Create a roadmap for implementation with timeline
7. Implement projects
8. Engage Faculty, Students, and Parents (CAP Program\*)
9. Measure and Verification (M&V) efficiencies
10. Report progress and Communicate to ALL stakeholders
11. Battle of buildings: Use M&V information to compete with other top performing schools across the Nation.

## EXAMPLES:

Energy Reduction to Energy Star (EPA) recommended Levels

Solar

Impure Water

Toxic disinfectant use

Recycling program

\* Becoming a part of the RAISE Campus Ambassador Program gives you the network to collaborate with innovators and other school professionals and students globally. Faculty can be considered for advisory board positions and students can join our CAP program as campus ambassadors.